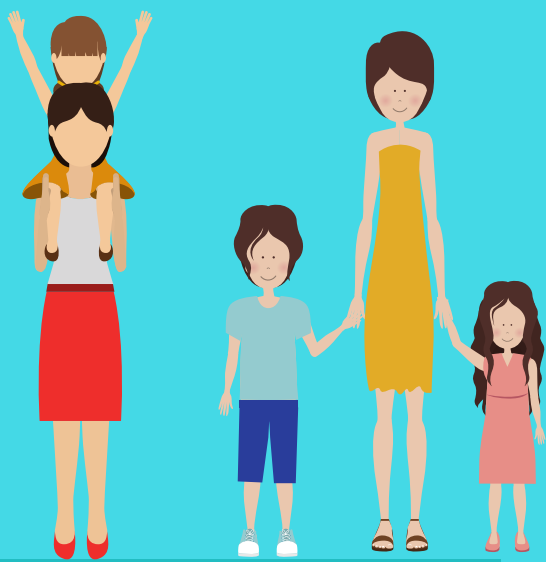


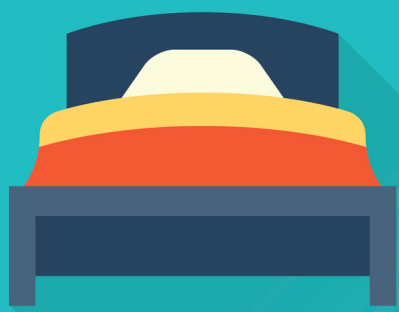
# Your PowHERful Impact Last Year

**YOUR Life-Changing Support...**



**6,000+**

**Women & Children**  
had critical services to  
**Escape Domestic Violence**  
and live better lives



You Provided

**13,737**

Nights  
**Emergency  
Shelter**

You Answered

**3,716**

**Crisis Calls ~**  
Often the First Step to

**Safety**



Gave IPV victims **Hope**  
Providing Legal  
Advocates  
every step of the way

**3,797**



You helped file

**1,327**

**Protection From  
Abuse Orders**



**Empowered  
Moms so that**

**396**

people had  
**joy** this  
holiday season



You  
Helped

**300**

**Children heal  
from trauma**



## **Because of You, Women had Support Leaving Abuse**

Thank You for making a difference for women at their most vulnerable time. Life-Threatening Abuse requires Life-Changing Services. Your Support is invaluable. Thank YOU for Everything You do to End Violence Against Women.

~ Shirl Regan, President / CEO