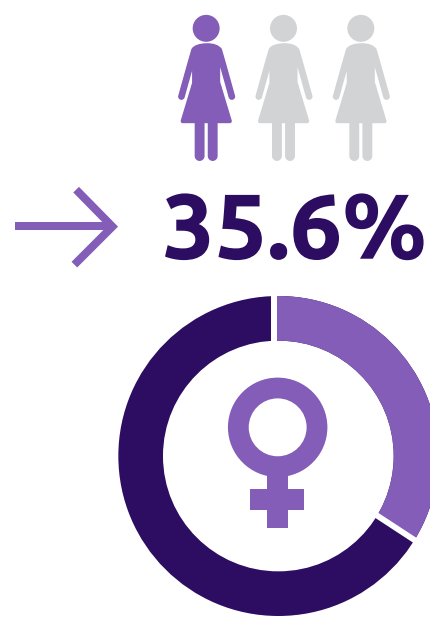


# Domestic Violence Statistics

Everyday countless women and children experience domestic violence. Often hidden, the symptoms of domestic violence, intimate partner violence, are far reaching. Below are some current statistics. With awareness comes change.

## INTIMATE PARTNER VIOLENCE

More than  
**1 IN 3**  
WOMEN



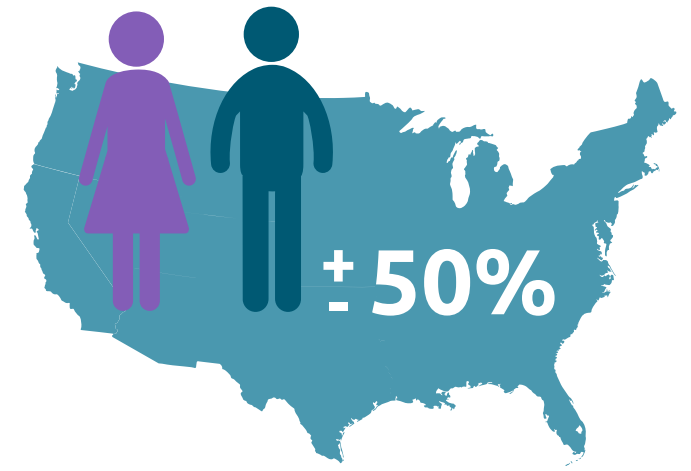
have experienced rape, physical violence and/or stalking by an intimate partner in the U.S.

Nearly half of all  
**WOMEN and MEN**  
in the U.S.

have experienced psychological aggression by an intimate partner.

and

Most experienced some form of intimate partner violence before the **AGE OF 25.**



**Every minute about 20 PEOPLE** are physically abused by an intimate partner in the U.S.



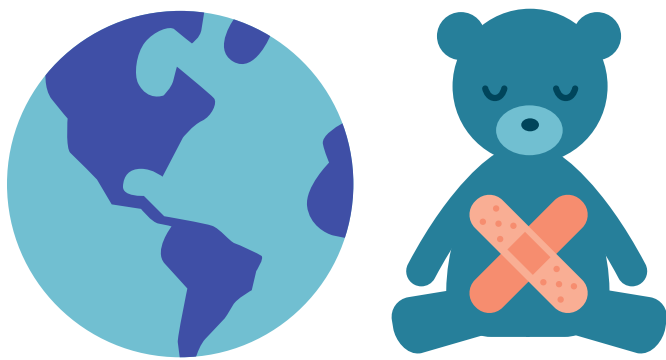
Over the course of a year, that equals more than **10 MILLION women and men.**

[www.WCSCanHelp.org](http://www.WCSCanHelp.org)

## CHILDREN AND DOMESTIC VIOLENCE

Children who experience Domestic Violence are:

Estimated number of children, worldwide  
**10,000,000**  
exposed to domestic violence DAILY.



**3+**

is the number of women **KILLED** everyday in the U.S. by a spouse.



Close to  
**50% OF MEN**

who abuse women are abusive toward their own children or children living with them.



**6 TIMES** more likely to commit suicide.



**74 TIMES** more likely to commit violent crimes against another.



**50 TIMES** more likely to abuse drugs and alcohol.

## TEEN INTIMATE PARTNER VIOLENCE

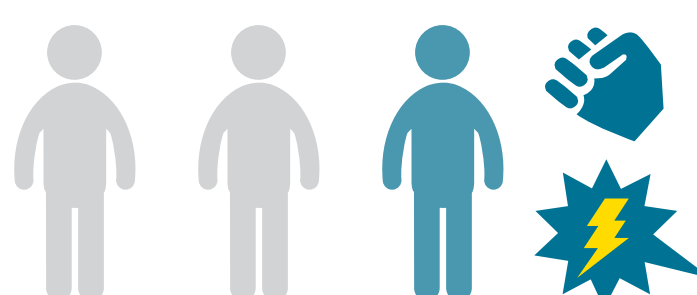
Nearly  
**1.5 MILLION**  
HIGH SCHOOL STUDENTS

nationwide experience physical abuse from a dating partner in a single year.



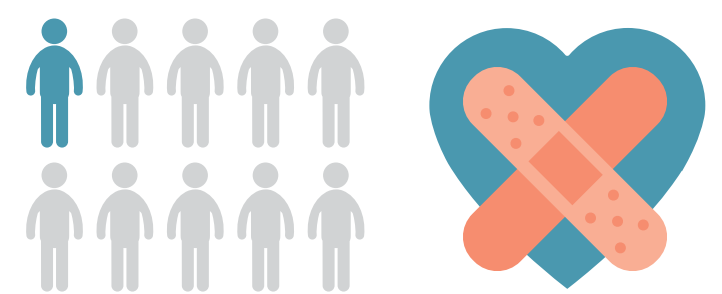
**1 IN 3**  
ADOLESCENTS

in the U.S. is a victim of physical, sexual, emotional or verbal abuse from a dating partner, a figure that far exceeds rates of other types of youth violence.



**1 IN 10**  
HIGH SCHOOL STUDENTS

has been purposefully hit, slapped or physically hurt by a boyfriend or girlfriend.



**ONE QUARTER** OF HIGH SCHOOL GIRLS have been victims of physical or sexual abuse.



Approximately **70%** OF COLLEGE STUDENTS say they have been sexually coerced.

YOU can make a difference. Help stop Domestic Violence.  
Donate today or learn more at [wcscanhelpp.org](http://wcscanhelpp.org)

Need help? 24-Hour Hotline at 412-687-8005 or toll free, 877-338-TALK (8255) for help or more information.